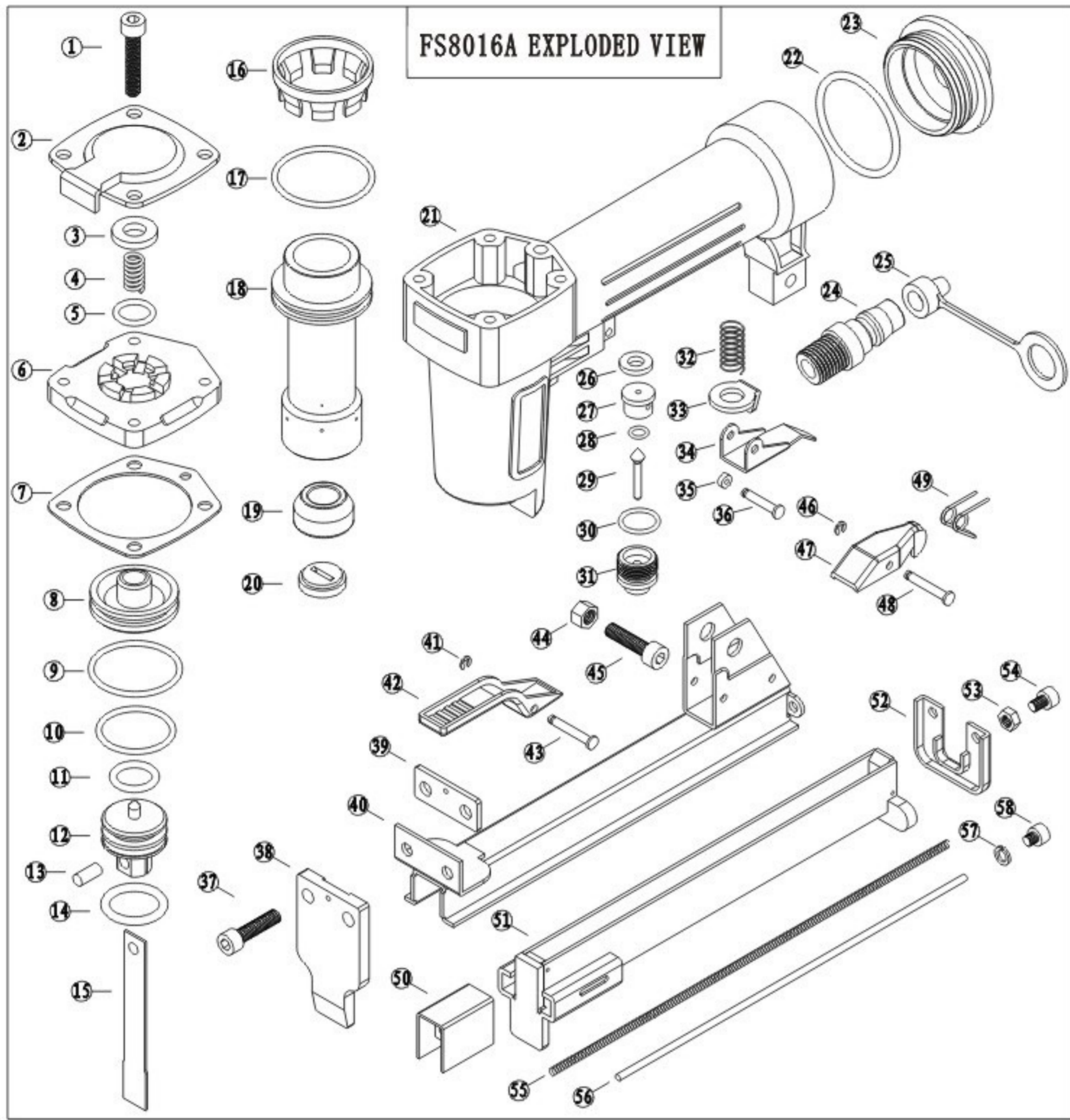


AT-8016 GAV HAVALI ZIMBA TABANCASI

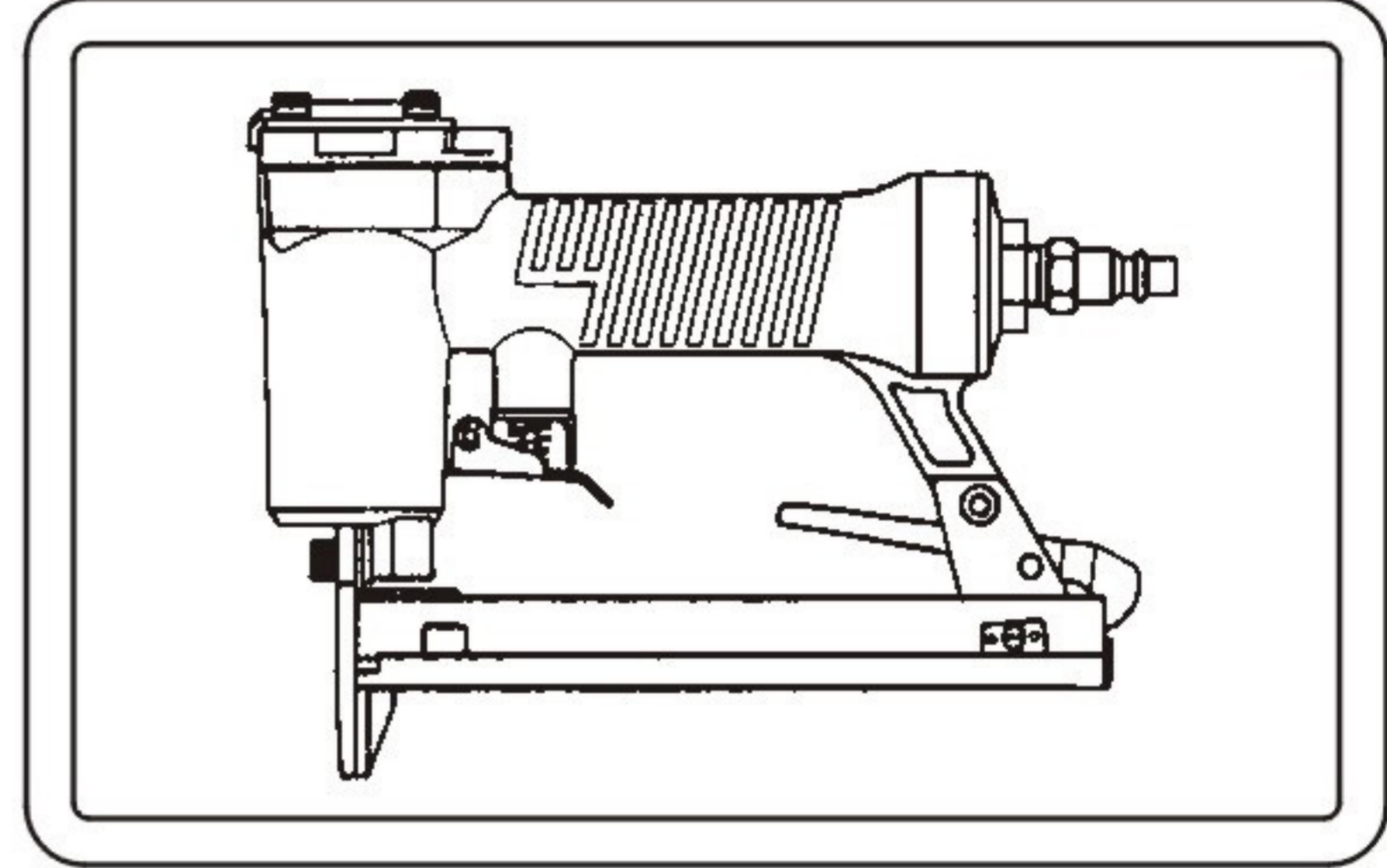


AT-8016 GAV HAVALI ZIMBA TABANCASI

OPERATING INSTRUCTIONS

MODEL 8016

FINE WIRE PNEUMATIC STAPLER



PLEASE READ THIS MANUAL CAREFULLY BEFORE USING TOOL
AT-8016 GAV HAVALI ZIMBA TABANCASI



TECHNICAL DATA

1. Model of tool.....FS8016A
2. Air inlet(Optional for thread size).....NPT 1/4"
3. Nail capacity.....140pcs
4. Nail range.....6—16mm,21Gauge Fine wire staple
5. Recommended operating pressure range.....3.5—5bar (50—85psi)
6. Appendixes.....Plastic cup with lubricating oil
..... Two spanners

FASTENERS

Fastener Figure:	FS8016A
L	6-16 mm
A	12.8 mm
B	0.7 mm
C	0.9 mm

VIBRATION CHARACTERISTIC VALUES IN ACCORDANCE WITH ISO 8662

SAFETY INSTRUCTIONS

1. Do not attempt to operate the tool until you read and understand all safety precautions and manual instructions.
2. Never allow to use oxygen or combustible gas as a power source for the tool Use filtered, lubricated, regulated compressed air only.
3. Never use gasoline or other flammable liquids to clean the tool. Vapors in the tool will ignite by a spark and cause the tool to explode.
4. Do not exceed maximum permissible operating pressure 7.8bar(115 psi).
5. Any tool equipped with contact actuation with a safety yoke shall not be used -if changing one driving location to another involves the use of stairs, ladders or scaffolding. -for closing boxes or crates and for fitting transportation safety systems.
6. Disconnect the tool from air supply before clearing jams, performing repairs and during non-operation
7. Do not keep the trigger pulled on safety yoke mechanism when carrying or holding the tool. Never carry the tool by the hose or pull the hose to move the tool. Carry the tool only by the handle.
8. At the workplace, always wear the protective equipment such as safety glasses, ear and head protection.
9. Do not use a check valve or any other fitting that allows air to remain in the tool.
10. Never point any operational fastener driving tool at yourself or at any other person.

TOOL OPERATION

Protect your eyes and ears. Wear safety glasses.....

Check and replace any damaged or worn components on the tool.....

1. Add a few drops of UNOCAL RX22 or 3-in-1 oil into the air inlet.
2. Install a quick connect fitting to the tool.

3. Connect the tool to an air compressor using a 3/8" I.D. hose. Make sure the magazine must be empty of all fasteners and the hose has a rated working pressure exceeding 200 psi (13.8 bar) and a female quick coupler.
4. Regulate the air pressure to obtain 62 psi(4.1bar) at the tool. Check the operation of the safety yoke mechanism following the instructions in this manual.
5. Insert fasteners into your tool following the instructions of loading the tool.
6. Reconnect the hose to the tool.
7. Test for proper fastener penetration by driving fasteners into a piece of wood. If the fasteners do not achieve the desired penetration, regulate the air pressure to a higher setting until the desired penetration is achieved. Do not exceed 7 bar(100psi) at the tool.

• CLEARING A JAM FROM THE TOOL

1. Disconnect tool from compressed air system.
2. Press down on latch and pull back on magazine
3. Remove jammed fastener and push magazine cover forward until catches

INDEX NO.	DESCRIPTION	INDEX NO.	DESCRIPTION
1	HEX. SOC. HD. BOLT (M5x25)	30	O-RING
2	EXHAUST CAP	31	TRIGGER VALVE GUIDE
3	RECTANGLE WASHER	32	TRIGGER SPRING
4	COMPRESSION SPRING	33	TRIGGER LOCK
5	O-RING	34	TRIGGER
6	CYLINDER COVER	35	O-RING
7	SEALING GASKET	36	TRIGGER PIN
8	HEAD VALVE PISTON	37	HEX. SOC. HD. BOLT (M5x25)
9	O-RING	38	COVER PLATE
10	O-RING	39	SPACER
11	O-RING	40	MAGAZINE CAP STOP
12	PISTON	41	E-RING
13	PIN	42	LATCH HANDLE
14	O-RING	43	PIN
15	DRIVER	44	SCREW (M5)
16	COLLAR	45	HEX. SOC. HD. BOLT (M5x25)
17	O-RING	46	E-RING
18	CYLINDER	47	LATCH
19	BUMPER	48	PIN
20	NOZZLE	49	LATCH SPRING
21	GUN BODY	50	PUSHER
22	O-RING	51	MAGAZINE CAP
23	END CUP	52	PUSHER STOP
24	AIR PIUG	53	SCREW (M5)
25	AIR PIUG SEAT	54	HEX. SOC. HD. BOLT (M5x10)
26	SEAL	55	PUSHER SPRING
27	TRIGGER VALVE SEAT	56	PUSHER GUIDE
28	O-RING	57	SPRING PIN
29	INNER VALVE SEAT	58	HEX. SOC. HD. BOLT (M5x8)